

Optiview CCTV Inc.

2052 St. John's Bluff Road, Jacksonville, FL 32246

Main Office Tel# 866.301.7680 or 904.727.7680

Technical Support: Tel# 904.855.1121

Website: <http://www.discount-security-cameras.net/>

Technical Support website: <http://www.optiviewpro.com/downloads.htm>

Tech Support Email: <mailto:tech@videodvr.com>



Remote Client Software Features:

- **Cost Efficient** – Uses IP infrastructure, so there is no need for costly dedicated cables between sites and servers and manage the data, videos, audio, and other files efficiently. Uses H.264 technology, which maximizes the use of the space on your HDD.
- **Leverage** - Centralize control of setup parameters, scheduled alerts and maintenance of those individual digital image devices like DVR, DVS, etc.
- **Straightforward Application and Management** - Supports centralized network recording management, flexible storage and HDD coverage and usage. Password-protected application with multi-level user rights assignment per user.

Video Display

- Max up to 16 preset video display groups. Each group can be set from 1up to 25 video display channels on one screen.
- Real time 25fps (PAL) or 30fps (NTSC) recording per channel
- One channel or multiple channels display in a screen.
- The ability to adjust hue, contrast, saturation, resolution, brightness of video display.

System setup:

- Connect to multiple DVR and/or video servers with one connection button
- Option to cluster your sites into groups for an easy one connection button
- Schedule recording for every channel per site
- Access control on the remote client software
- Multi-level user authorization management on the client software
- Remotely edit setup on the servers (PC-DVR and Digital Video Servers)
- Optional Remote Voice chat with other sites
- PTZ camera remote control

Recording and Storage:

- Client may act as a Data Center or a Virtual DVR server wherein it can record video from all the sites it is currently connected to.
- Real time 25fps (PAL) or 30fps (NTSC) recording per channel
- Each camera can have its own individual schedule settings to record video according to the recording plan on each channel. Options include continuous recording, motion-detection event, alerts activation recording, manual recording or no recording at all.
- Support watermark and date/time added on the OSD.

Search and Playback:

- Support local playback and remote playback simultaneously
 - Playback on single or multiple channels simultaneously
 - Continuous recording of video from sites while doing a playback
 - Capture image as .bmp format during playback
 - Search for video recording files with time bar. Real time playback, frame-by-frame playback, fast-forward (2x, 3x, 4x, 5x), Rewind (1/2x - 1/5x), pause, and playback at the selected point in time.
 - Video display windows zooming
- (Bandwidth or Internet speed connection must still be consider to affect these features except for local playback)



Table of Contents

Page

Chapter I - Initial Setup of the Remote Client

Initial Setup of Remote Client	4
Basic Functions of the Main Remote Client User Interface.....	4
Initial Setup of the Remote Client Connection.....	6
Modify existing server connection information.....	7
Clustering Remote Client Connections.....	8
Record Set / Local Recording Plan.....	9
User Rights Setup.....	11

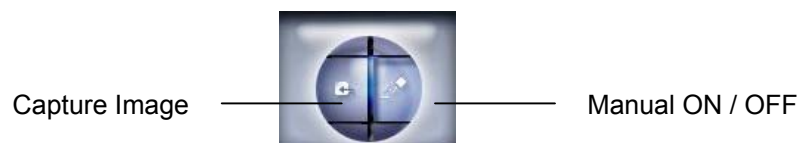
Chapter II – Using Remote Client Application

Connecting to Sites.....	13
Preset a position of the PTZ camera.....	14
Remote Playback	16
Saving Video Clip Files.....	16
Local Playback and Other Features	18
Requirements to place a DVR on the Internet.....	19

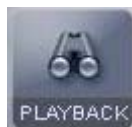
I. Basic Functions of the Main Remote Client User Interface



1. Capture Image – captures the image on the currently selected camera while viewing.



2. Manual ON/OFF – By default, remote client will automatically record images from the remote host server (depending how it was setup on record setup). However, you can manually turn ON or OFF the recording on this switch button.



3. Playback – This is actually the option to playback video from the host DVR server. In fact, you will be searching the recorded video files from the host DVR server. Detailed information will be discussed later.



4. Setting - The main system setup for the remote client begins on this “Setting”. DVR server connection information such as IP addresses, port number, login information and many other parameters will be configured on this setting.



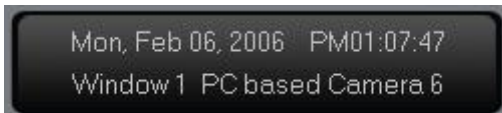
5. Lock - Security feature of the remote client software which can be control using the multi-level user rights setup to leverage security and user management.



6. Display - Select your own preferred display settings starting from single screen display up to 25 screen display.



7. Menu - Other features of the client software are on this option such as remote voice chat, local playback, view remote DVR server log, view local log and the (Remote) Device setup.



8. Information Display Panel - provides basic information about the currently selected camera/window.



9. Exit or Minimize – Select to exit or minimize the remote client application.



Group Connect – sites can be cluster by group for easy single button connection

List Connect – provides you a list of the sites you’re currently connected into.

PTZ Control – remotely control your PTZ camera

Color Adjust – adjust color of camera such as hue, contrast, brightness etc..

DO Control – control the alarm output device from the server remotely.

II. Initial Setup of the Remote Client Connection

The System setup for the remote client connection is made up of 4 major configuration setup as shown:



By default, when the “Setting” option is selected from the main remote client user interface, the Server IP menu comes out first, also as shown below.

- **Server IP** – This sets up all the basic settings to make a remote connection to the host server.
- **Group Set** – Remote sites can be cluster into group for easy connection.
- **Record Set** – Each camera window can be configured how to respond on recording video options from the host server. Options are normal recording, sensor-activated recording, motion-detect recording, or no recording at all.
- **Right Set** – It is the security feature of the remote client application to manage user rights.

After the client software has been installed, the next task to do is to setup the remote client application for remote connection. Open the client application and click on the “Setting”. You will need the following information from the DVR server or Video server: IP addresses, login information, port number to be used, device type and other information as shown and enumerated below:


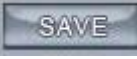


Server IP menu – Main System Setup

Initial remote connection setup starts by providing the following information:


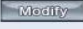

1. **Server Name** Enter a descriptive name or IP Alias name for the DVR or Video server machine (host servers).

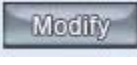

2. IP Address Enter the local or public IP address of the host server.
3. Connect Port Enter the port number to be use to communicate with the host server.
4. Login User ID Enter the user name account to be used to connect to the host server.
5. Login Pass Enter the password of the username account used for login (at item# 9).
6. Device Type Select which type of machine you are going to connect into. Options are: PC DVR, Embedded and Video Server.
7. Camera Number Select the total number of camera the host device is capable of handling.
8. IF Use Dns to Get IP Select "Yes" if the host server is using dynamic IP or NO if it is using static IP address.
9. Dns Server IP Enter the Dynamic DNS server used by the host DVR/Video server.
10. Dns Server Port Enter the port number used to communicate with the DNS server.

After the required information has been entered into, select  to add the server information on the **CONNECT SERVER INFO** list and then click on  to save the data.

To modify existing server connection information, highlight the server information on the list as shown below and the data will be displayed below it ready for editing.

CONNECT SERVER INFO						
IP Alias	IP Address	Disp. Port	Login User	Login Pass	Device Type	Use Dns?
PC based	192.168.1.7	5100	admin	*****	PC DVR	no
Video SVR	192.168.1.175	8000	admin	*****	Video Server	no
svr	192.168.1.253	5100	admin	*****	PC DVR	no
svr2	192.168.1.250	5100	admin	*****	PC DVR	no
svr3	192.168.1.251	5100	admin	*****	PC DVR	no
svr4	192.168.1.220	5100	admin	*****	PC DVR	no
svr5	192.168.1.252	5100	admin	*****	PC DVR	no
svr6	192.168.1.249	5100	admin	*****	PC DVR	no

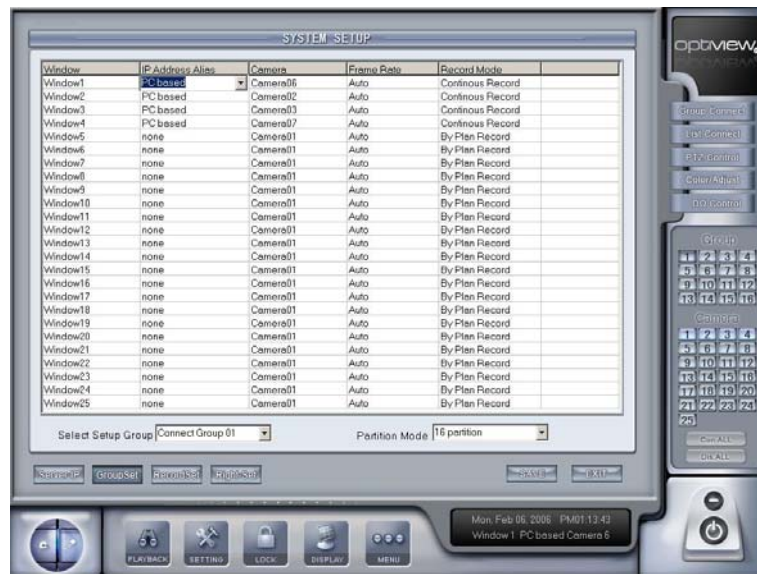
Server Name	<input type="text" value="svr"/>	Device Type	<input type="text" value="PC DVR"/>	
IP Address	<input type="text" value="192.168.1.253"/>	Camera Number	<input type="text" value="16"/>	
Connect Port	<input type="text" value="5100"/>	IF Use Dns to Get IP	<input type="text" value="no"/>	
Login User ID	<input type="text" value="admin"/>	Dns Server IP	<input type="text"/>	
Login Pass	<input type="password"/>	Dns Server Port	<input type="text" value="7100"/>	

You will need to click on  to register the changes you made and then  to save the changes.

GroupSet

III. Clustering Remote Client Connections,

You can connect to multiple host servers (DVR or Video servers) and group them according to your own preference. There can be a maximum of 16 groups of connections. Each group will have a display screen partition option starting from single screen partition up to 25-partition screen display. You can setup which host site camera number will be displayed on each particular window screen and have the option to record the video feed while viewing the site.



Select Setup Group

1. Select the group number you are going to use for the group of sites.

Partition Mode

2. Select the display screen partition you preferred for each group.

Window	IP Address Alias	Camera	Frame Rate	Record Mode
Window1	PC based	Camera06	Auto	Continous Record
Window2	PC based	Camera02	Auto	Continous Record
Window3	PC based	Camera03	Auto	Continous Record
Window4	PC based	Camera07	Auto	Continous Record
Window5	none	Camera01	Auto	By Plan Record

3. For each window, you have the option to select whose host servers will it connect to and what camera number from that particular site would you want to be displayed into it.

Frame Rate

4. Auto Select the frame rate to be used which may be auto, real-time and 1 fps. It is recommended to leave it at auto.

Record Mode

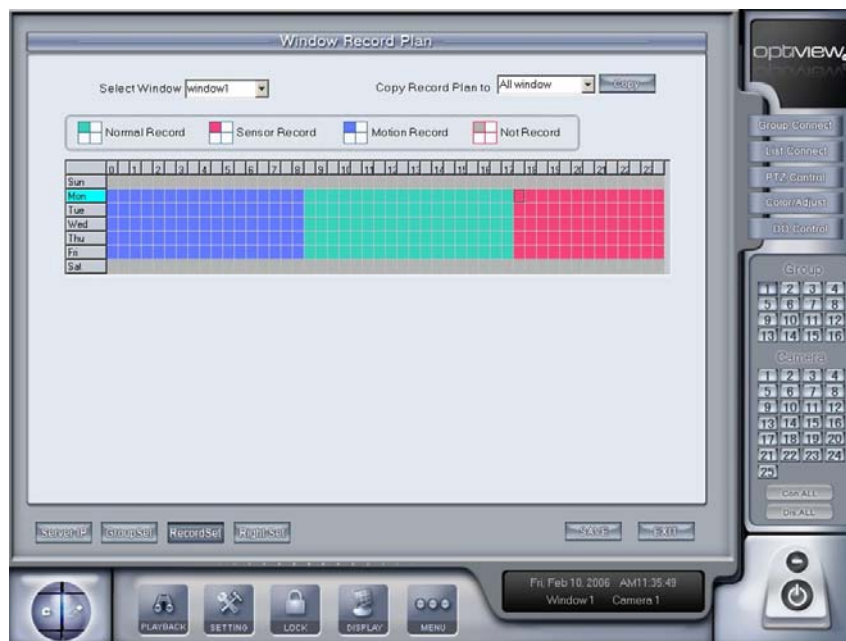
5. By Plan Record Select the record mode you prefer for a specific camera. You can select "continuous recording" which means that upon connecting to the site, the client software application will start recording video from the host camera to your local hard drive or "By plan Record" which will follow the scheduled record settings on the "Record Set" setup menu.

IV. Record Set, RecordSet

The operator will be able to choose how each of the remotely connected camera display will record on your local hard drive. You can set the time when you want them to record and how you want them to record or no recording at all.

The example below is showing that the camera on window# 1 is set not to record at the local hard drive during Saturday and Sunday as indicated with the gray color bars. During the weekdays, that is from Monday thru Friday, it is set to record only when there is a motion detected on camera from 12:00 AM thru 8:00 AM as indicated by the blue color bars. Starting from 8:00 AM thru – 5:00 PM, the camera at window# 1 will be doing normal recording. Again, from 5:00 PM thru 12:00 midnight as indicated by the red color bars, the client software will be recording the video only when the sensor devices are activated by the DVR system.

Window Record Plan

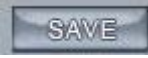


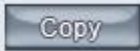
1. Select Window Select the window number you are going to work on. There is a maximum 25 windows available to choose from.

2.
 Normal Record
 Sensor Record
 Motion Record
 Not Record
 Select and click one of the recording options on how you want the client software to record the video from the camera on this window number.

- Normal Record – means a continuous normal recording of video to the local hard drive.
- Sensor Record – means client software will only record on sensor-activated video recording.
- Motion Record – means client software will record only on motion-detected video recording.
- Not Record – simply no recording of video to the local hard drive.

	0	1	2	3	4	5	6	7	8	9	10	11	12	13	14	15	16	17	18	19	20	21	22	23
Sun																								
Mon																								
Tue																								
Wed																								
Thu																								
Fri																								
Sat																								


3. Select and click the day and time at your own preference. The 0 thru 23 represents the time of the day and the far left column is for the days of the week. You will need first to click the recording option you prefer which is on item# 2, and then select and click on this schedule table for the day and time you prefer. When you are finished setting it up, click on the  button to save the configurations.

4. Copy Record Plan to  This is convenient to use if all other windows will have the same settings as what you are currently working on. Simply select "All Window" and then the "Copy" to copy these settings to all the windows. You can also just select one particular window number that you want to copy these settings into and then click copy. Again, just click "Save" when you are finished.


V. Right Set,

There is a multi-level user rights setup that you can assign to each specific user in order to control and secure the Remote Client system settings on your application. It comes in two-part setup compose of "User Setup" and "Rights Setup". The default user account is the "admin" account, which has all the admin rights to the application. For security purposes, even as you logged in as admin account remotely, you will still not be able to go into the "Password Setup" menu when changing settings at the DVR server.

Use Password Management This option will enable or disable the use of the security login to access the Remote Client Software. You will need to decide which one you prefer, otherwise setting up all the user account passwords are useless if this option is disabled.

To add a new user account, you will need first to click on the  button.

A. Basic user information needs to be provided on this section such as:

1.  Click on this button to add a new user account.

2. User ID Enter the user name of the new user account.

3. Auth.Level Select that authority level you want to give this new user. The manager level can access and edit user passwords and the operator level cannot.

Password

4. Confirm Password Enter the password for the new user account and re-enter it to confirm the password.

B. **RIGHT SETUP** Specific user access rights will be configured on this section such as:

1. **Local Setup** Check this user right if you want to give the user an access right to the remote connection setup of the remote client software. Otherwise, uncheck this option. The user account with this "Local Setup" rights can access the following menus and make changes on its settings:



Note that a user with a "Local setup" access right still cannot go to the "Right Set" menu which is where the user accounts are kept.

2. **Local Manual Record** Check this user right if you want to give the user an access right to force a local manual recording of video. Otherwise, uncheck this option.

3. **Remote Setup** This user right is a very important part of the security feature of the client application software. If this access right is checked, you are giving the user an access right to make changes on how the host DVR server is setup. Otherwise, uncheck this option to block a user from accessing the host DVR settings.

4. **Local Playback** Basically, this option will allow the user to access the "Playback" menus and all the other associated functionalities on playback such as play locally recorded video files, capture images, make copies of the video files etc...

5. **Color Adjust** This option will allow user to make adjustment on the color display such as hue, brightness, contrast, etc...

6. **Remote Playback** If this access right is checked, you are giving the user an access right to go to Playback menus of the host DVR. A user having this user rights can play and make copies of the video files on the host server. Otherwise, uncheck this option to block a user from accessing the host DVR video files.

7. **View Local Log** Simply to view local log files on the local machine.

8. **View Remote Log** This will allow the user to view all the activities going on the host DVR system.

9. **Program Minimize** This will allow the user to minimize the remote client software and be at the PC desktop.

To edit or delete existing user, select the user account from the list as shown here

Select User ID

and then click on the



Click on the button to save changes.

I. Connecting To Sites

Chapter II Using the Remote Client Application




By default, this interface shows up when the remote client software is opened. To connect to the site or group of sites, select and click the group number button on the Group keypad. If the number is blue color icon, means that number is currently selected, otherwise it will be gray in color.

Click on the  to connect to the sites.

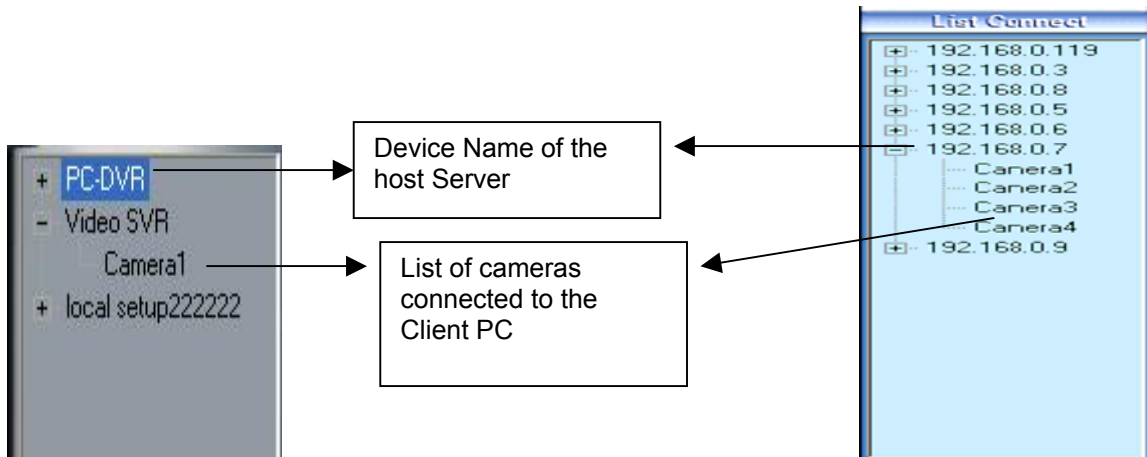
After the Group number has been selected, you can manually disconnect and reconnect to the camera by selecting and clicking the camera number using the camera number keypad.

Click on the  to disconnect to all host sites and disconnect all currently connected cameras.

II. List Sites



This will provide you a list where you are currently remotely connected. You can also manually connect or disconnect to site camera using the List Connect, just double left click on each camera you want to connect.



III. PTZ Control,

Control your PTZ camera and all its other associated relays remotely using this option.



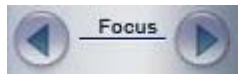
Relay Controls the PTZ cameras internal relay (relay1) or the decoder relay (relay 1). It may also be used to turn on a light or control an access gate.



Wiper (on/off): If you are using the PTZ cameras with wiper control relay, this toggles the wiper on and off.



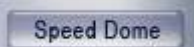
Zoom Controls the zoom function of the PTZ camera. Zooms in or out the image.



Focus Overrides the auto-focus setting of the PTZ camera, allowing the user to further focus on the image.



Iris Overrides the PTZ cameras auto iris and allows operator to brighten or darken the image.

When the  button is pressed, the SP Dome preset keypad as shown below appears next to the exit button.



1. To preset a position of the PTZ camera:

- a. Select a camera number that you want to configure. Press the “SP Dome” button. Press a preset number on this keypad shown below:



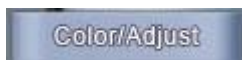
- b. Adjust the camera on your preferred settings on angle position, focus, iris and zoom using the PTZ control panel shown here:



- c. When finished setting that up, press “SET” button. Note that the pre-programmed keypad on the left as shown below will change to blue color number icon. Blue color icon means there is a pre-programmed preset on this button for the PTZ camera currently selected.



V. **Color Adjust**





Allow you to adjust locally the color view settings such as Hue, Brightness, Contrast, etc.

VI. Data Output Control (DO Control)

DO Control



Data Output Control – This feature is optional only. It is for the use of alarm devices or sensor relays tied up to the DVR system. It can be a door or gate opener, etc... It toggles the relays tied up to the Data Output ports to ON or OFF.

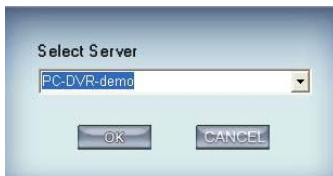


VII. Remote Playback,

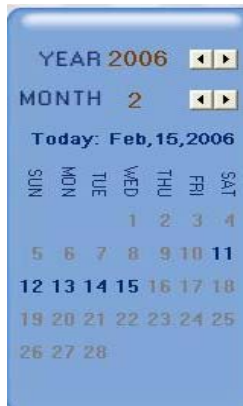
- This function will allow you to playback and save on your local hard drive the video recordings from the DVR server. There is a maximum 4 screen limit to do a remote playback.

To Playback Video Recordings:

1. Click the playback button to have you choose which DVR server would you like to connect to. You will select from the list of servers as the figure is shown below:



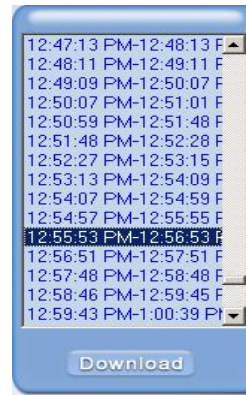
2. The calendar will be displayed as shown here; select the date you want to view and the camera number keypad will automatically be displayed to have you choose the camera you want to view. Number icons in blue color means there is a recorded video on it, otherwise they're empty. The feature of the remote playback is very similar to the DVR server playback.



Calendar Panel

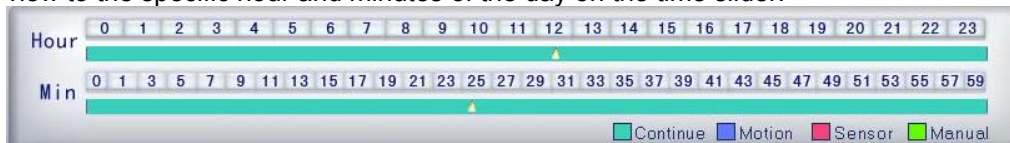


Camera Number Pad



File List

After the Date and camera number has been selected, you will be able to view previously recorded video files from the DVR server. Follow the same procedure as that of the DVR server in adjusting your choice of view to the specific hour and minutes of the day on the time slider.



3. There are three ways to save the video clip files on your local hard drive.

a. File List



b. Clip file button

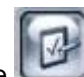


c. Capture Image

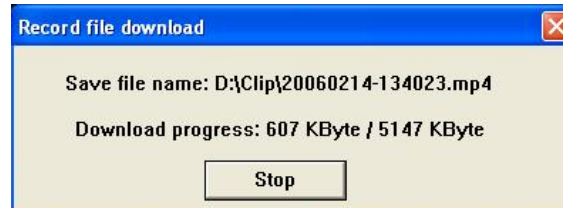


Using the File List option:

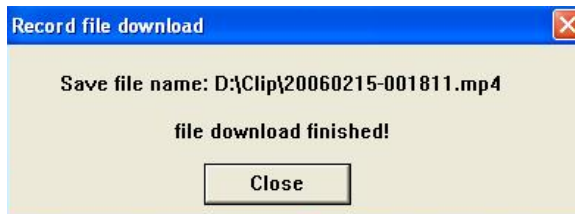


After the date and camera number has been selected, click on the  button. Scroll up or down to find the specific time of the day you preferred to playback or save on the local hard drive. Just double left click on the file to play it back on the screen. If you need to download the file on

your local hard drive, click the  button and you will be given a message box for the location of the file after it has finished downloading it to your local hard drive just as shown below:



Shown here is the process of downloading the video clip file to local hard drive.



After the file has been downloaded, this message box will tell you where the file is located on your local hard drive.

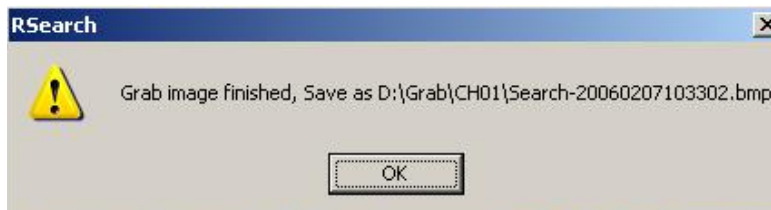


Using the Search Clip File button,

Video files are stored on the DVR's hard drive on a file size depending on the Swap File size set at the DVR's camera setup. After the date, camera number and the specific time of the day has been selected, click on this button to start saving the clip file on your local hard drive. The length of time for this clip file will depend on where in point in time did you start saving the clip file within the range of the Swap file size. There is no way to tell how long will the search clip file will be. So the length of the clip usually varies. The best one to use in saving a selected remote video files to your local hard drive is the File List download.



Capture Image - click on this button while viewing the video to capture a snapshot in .bmp format. You will then have a message box to give you the location of the capture image, just as shown below: (RSearch - indicates a remote search captured image).



VIII. Local Playback



To access local playback menu, click on the menu button and select local playback. The feature of the local playback on a remote client software application is exactly the same as the Playback on a DVR server system. Please refer to page 11-16 of the Operation manual of the DVR system. You will only have the option to do a local playback if you have setup the remote client software to record video to your local hard drive while connected from the DVR or Video servers. Please see the pages 7(item5) through page 9 on this manual for local recording setup.

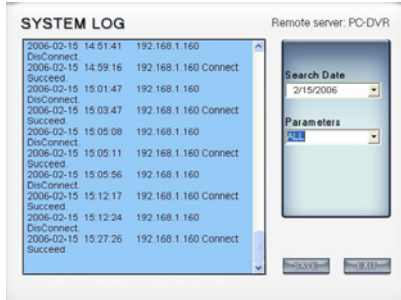


IX. Other Features Menu,

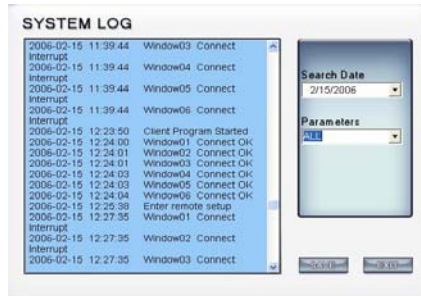
Other features of the client software can be found on this function button such as the remote voice chat, local playback, view remote and local system log and access the (remote) Device Setup.

1. Remote Voice Chat – an optional feature to have a voice chat to the other remote DVR server.

- View Local and Remote System Log – this option allows you to view all the activities going on to a DVR system and the remote client PC. You must have the user right assigned to your user account to be able to view remote DVR system log.



Remote DVR System Log




Local Client System Log

- (Remote) Device Setup – this actually allows you to make changes on the configuration settings of a remote DVR server system as long as you have the user rights assigned to your user account at the remote server. However, for security purposes, you will not be allowed to go to “Password Setup” menu even as you logged in as admin user.

To do a (Remote) Device Setup:



- Click on the  button and select “Device Setup”.
- You will then select from the list which specific server would you like to work on.



It takes a while for it to connect to the remote DVR settings depending on the Internet upload speed connection from the host DVR site.

Requirements to place a DVR on the Internet

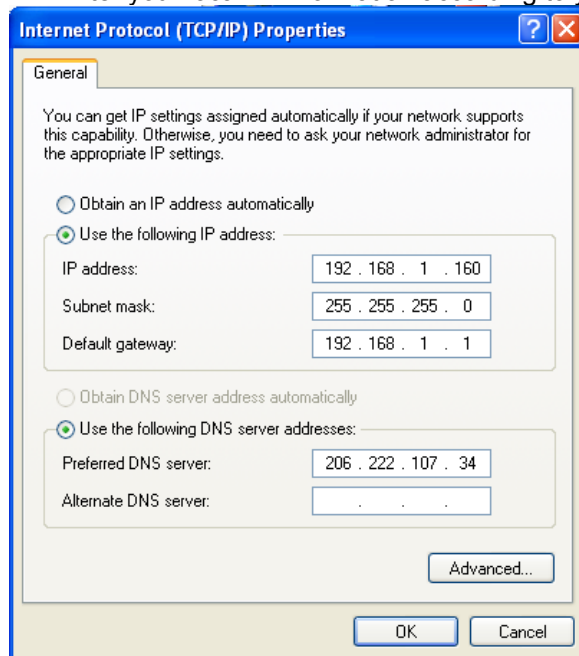
On a local network, you should be able to readily access your DVR system remotely via web browser or the remote client software by using the local IP address of the DVR system.

Note: This information is provided as a courtesy only. Optiview Inc. does not provide technical support for routers, similar network devices and/or problems in configuring your local area network. If you encounter problems, please contact your network device manufacturer, Internet Service Provider or Microsoft for technical support.

1. It is highly recommended to use static public IP address if you need to have the DVR available online (Internet).
2. Configure a static local IP address on your DVR.

Step to assign static local IP address:

- Close the DVR software program
- Click on “Start” – RUN – on the OPEN box, type in [ncpa.cpl](#), then click OK.
- Right click on Local Area Connection, then select Properties
- Double-click Internet Protocol (TCP/IP)
- Enter your local IP information according to your LAN IP scheme settings



- Configure port forwarding or any similar function on your local router and enable/open the following port numbers:

Port number:
80 – Web
5100 – Remote client
5300 – Alarm
7100 – DNS